

## Rosetta-Lt Firmware Update Instructions

### Requirements:

- A good 9V battery installed in the Rosetta-Lt.
  - Rosetta Programming Kit (Serial Cable and GDFlash program)
  - Latest update file (i.e. 184Main088.hex from the CD or GD tech-support)
  - Computer or laptop with an available “Serial” (RS-232) port
- Note: Serial ports from some laptops and converters/adapters may not work properly with Rosetta. Use a standard desktop PC with serial port if necessary.

### 1) Connect the Programming Cable (DB-9 Female to RJ12 Serial Data Cable)

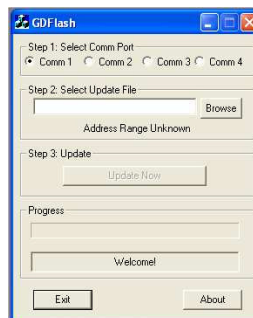
- a. Connect the female DB-9 end of the serial cable to an available serial port on your PC or laptop.
- b. Connect the RJ-12 end of the serial cable to the “Monitor” jack on the Rosetta-Lt.

### 2) Run the GDFlash Program

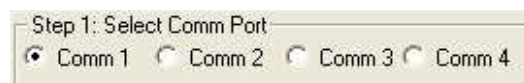
- a. Insert the GD Flash CD into the CD drive on the computer.
- b. Using “My Computer” or Windows Explorer Browse to and click on the CD drive.
- c. Locate and Double Click the **GDFlash.exe** file (located on the CD) to launch it.



- d. The GD Flash program window will open;

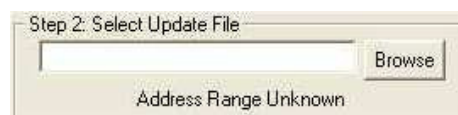



- e. Under “Step 1 Select Comm Port”;

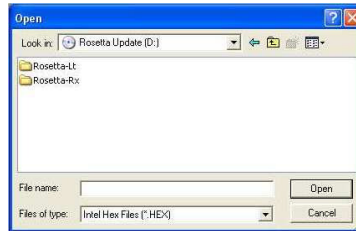


- Select the Comm Port that matches the serial port that programming cable is connected.
- If unsure which to use, try “Comm 1”
- May need to try other Comm Ports after step 3 below.


- f. Under “Step 2 Select Update File”



- Click “Browse” and browse (look in) the CD drive in the  Rosetta-Lt (or wherever the latest update file is located).

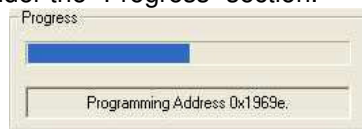



Note: Contact General Devices Tech-Support for the latest firmware version and compatibility information.

- Click on the desired file (i.e. 184Main088.hex) so it is highlighted.
  - Click the “Open” button.
- g. Under “Step 3 Update”
- Click the  button

### 3) Programming

- Rosetta-Lt will turn on and the LED’s will begin to blink.
- The status will be displayed under the “Progress” section.



- Erasing
  - Programming
  - Verifying
- When programming is complete  will be displayed.
  - Unplug the Rosetta-Lt and test.
  - Repeat for additional units as necessary.

### Trouble Shooting:

- If you get an “error opening comm. port” message;
  - Select a different Comm Port under “Step 1” and retry.
- If you get a “Too many retries...” error;
  - Click Ok and click "Update Now" again
- If the Rosetta-Lt does not turn on;
  - Click Ok and click "Update Now" to try again
  - Press Start/Stop on Lt to manually turn it on (Versions 073 & later)
  - Try using another PC – some may have low RS-232 levels

If you need assistance, contact General Devices Tech Support at (201) 313-7075 (9-5 EST) or visit the Tech-Support section of the GD web site [www.general-devices.com/techsupport.htm](http://www.general-devices.com/techsupport.htm).

End.