

Rosetta-Rx Firmware Update Instructions

Requirements:

- Rosetta Programming Kit (Serial Cable and GDFlash program)
- Latest update file (i.e. 185Main053.hex from the CD or GD tech-support)
- Computer or laptop with an available “Serial” (RS-232) port

1) Connect the Programming Cable (Serial Cable ONLY)

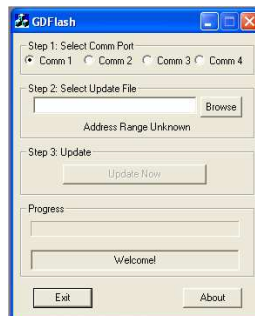
- a. Connect the female DB-9 end of the serial cable to an available serial port on your PC or laptop.
- b. Connect the male DB-9 end of the serial cable to the RS-232 jack on the Rosetta-Rx.

2) Run the GDFlash Program

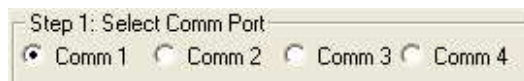
- a. Insert the GD Flash CD into the CD drive on the computer.
- b. Using “My Computer” or Windows Explorer Browse to and click on the CD drive.
- c. Locate and Double Click the **GDFlash.exe** file (located on the CD) to launch it.



- d. The GD Flash program window will open;




- e. Under “Step 1 Select Comm Port”;

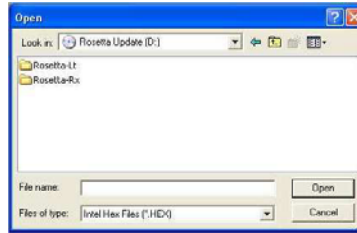


- Select the Comm Port that matches the serial port that programming cable is connected.
- If unsure which to use, try “Comm 1”


- f. Under “Step 2 Select Update File”



- Click “Browse” and browse (look on) the CD drive in the  Rosetta-Rx (or wherever the latest update file is located).



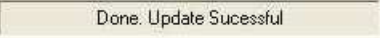
Note: Contact General Devices Tech-Support for the latest firmware version and compatibility information.

- Click on the desired file (i.e. 185Main053.hex) so it is highlighted.
 - Click the “Open” button.
- g. Under “Step 3 Update”
- Click the  button

3) Programming

- a. Rosetta-Rx will turn on and the LED's will begin to blink.
- b. The status will be displayed under the “Progress” section.



- Erasing
 - Programming
 - Verifying
- c. When programming is complete  will be displayed.
- d. Unplug the Rosetta-Rx and test.
 - e. Repeat for additional units as necessary.

Trouble Shooting:

- If you get an “error opening comm. port” message;
 - Select a different Comm Port under “Step 1” and retry.
- If you get a “Too many retries...” error;
 - Click Ok and click "Update Now" again

If you need assistance, contact General Devices Tech Support at (201) 313-7075 (9-5 EST) or visit the Tech-Support section of the GD web site www.general-devices.com/techsupport.htm

End.